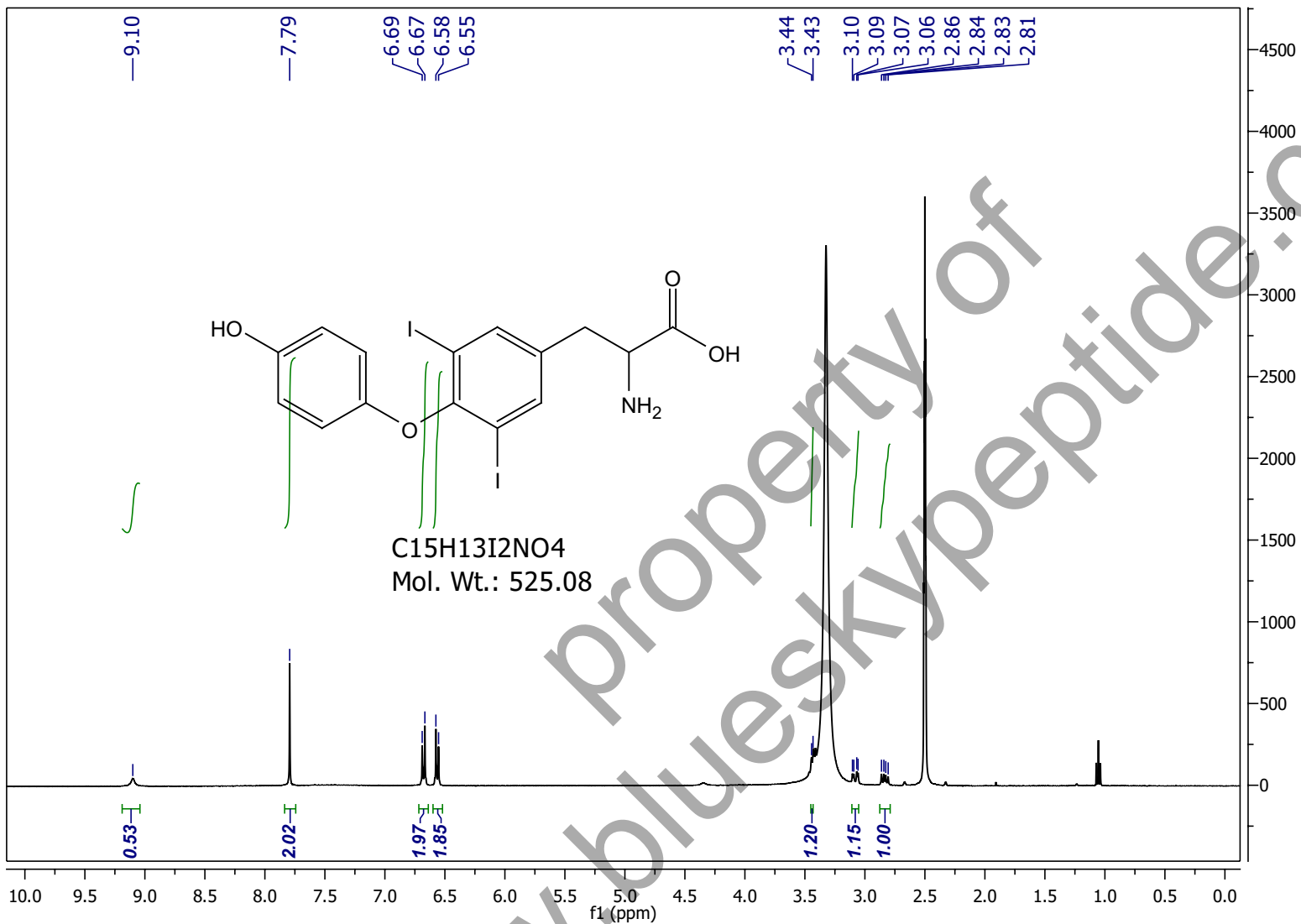


Acquisition Parameters
NAME: 101053-
T2-1 Proton_dmsol_01.fid/fid
Origin: vnmrs
Owner: jrhong
DATE: 2012-11-14T23:23:41
Solvent: dmsol
PULPROG: s2pul
TE: 25 C
NS: 64
SFO1: 399.61 MHz
SWH: 6410.3 Hz
NUC: 1H
TD: 13132

F2 - Processing Parameters
SI: 32768
DC: 0.05
LB: 0.00 Hz
First Point: 0.50
FT: Hyper Invert Quadrature
Phase: Manual
Ph0: 111.26
Ph1: -5.60

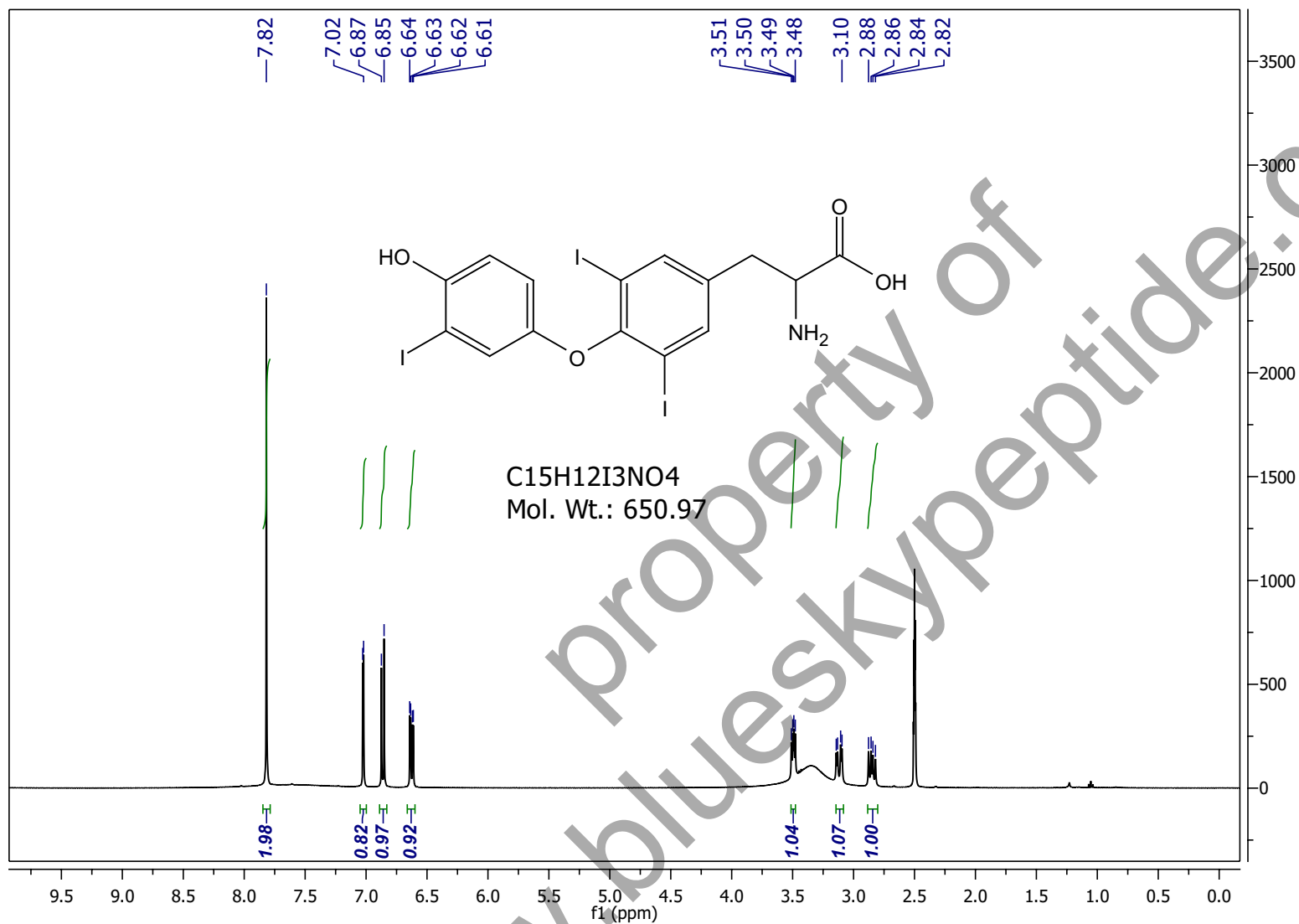
1H NMR (400 MHz, dmsol) δ 9.09 (s, -1H), 7.79 (s, 2H), 6.68 (d, J = 8.9, 2H), 6.56 (d, J = 8.8, 2H), 3.06 (d, J = 9.7, 1H), 2.86 – 2.76 (m, 1H).



Acquisition Parameters
 NAME: 101053-T2-2_Proton_dms0_01.fid/fid
 Origin: vnmrs
 Owner: jrhong
 DATE: 2012-11-14T23:30:41
 Solvent: dms0
 PULPROG: s2pul
 TE: 25 C
 NS: 64
 SFO1: 399.61 MHz
 SWH: 6410.3 Hz
 NUC: 1H
 TD: 13132

F2 - Processing Parameters
 SI: 32768
 DC: 0.05
 LB: 0.00 Hz
 First Point: 0.50
 FT: Hyper Invert Quadrature
 Phase: Manual
 Ph0: 123.34
 Ph1: -9.39

¹H NMR (400 MHz, dms0) δ 9.10 (s, 1H), 7.79 (s, 2H), 6.68 (d, *J* = 9.0, 2H), 6.56 (d, *J* = 9.0, 2H), 3.44 (d, *J* = 4.9, 1H), 3.08 (dd, *J* = 14.2, 4.4, 1H), 2.83 (dd, *J* = 14.2, 7.9, 1H).



Acquisition Parameters
 NAME: 101053-
 T3-1_Proton_dms0_01.fid/fid
 Origin: vnmrs
 Owner: jrhong
 DATE: 2012-11-15T00:47:35
 Solvent: dms0
 PULPROG: s2pul
 TE: 25 C
 NS: 32
 SFO1: 399.61 MHz
 SWH: 6410.3 Hz
 NUC: 1H
 TD: 13132

F2 - Processing Parameters
 SI: 32768
 DC: 0.05
 LB: 0.00 Hz
 First Point: 0.50
 FT: Hyper Invert Quadrature
 Phase: Manual
 Ph0: 109.08
 Ph1: -5.41

$^1\text{H NMR}$ (400 MHz, dms0) δ 7.82 (s, 2H), 7.02 (d, $J=3.0$, 1H), 6.86 (d, $J=8.9$, 1H), 6.63 (dd, $J=8.9, 3.0$, 1H), 3.49 (dd, $J=8.2, 4.6$, 1H), 3.12 (dd, $J=14.4, 4.5$, 1H), 2.85 (dd, $J=14.3, 8.3$, 1H).