

MASS Analysis Report

Sample: **Clomifene citrate**

CAS No.: 50-41-9

Synonym: (E,Z)-2-(4-(2-chloro-1,2-diphenylethenyl)phenoxy)-N,N-diethyl-ethanamine Citrate

Molecular Formula: C₂₆H₂₈ClNO.C₆H₈O₇

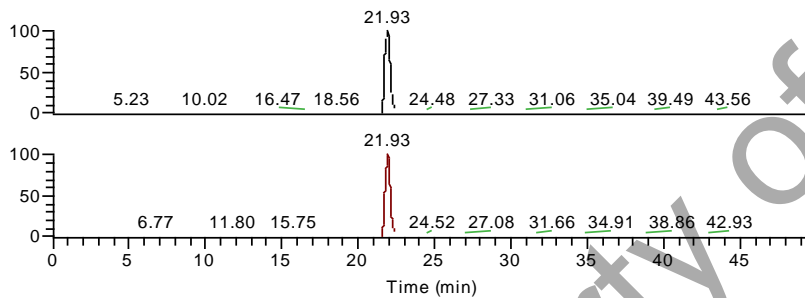
Molecular Weight: 598.10 (406.4 for clomifene)

Date: May. 29, 2014

C:\Xcalibur\data\12361001\Clom-M002

5/29/2014 5:35:19 PM

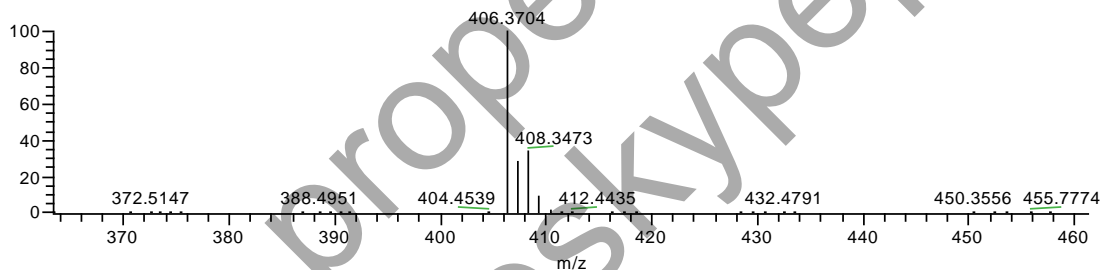
RT: 0.00 - 49.63 SM: 15G



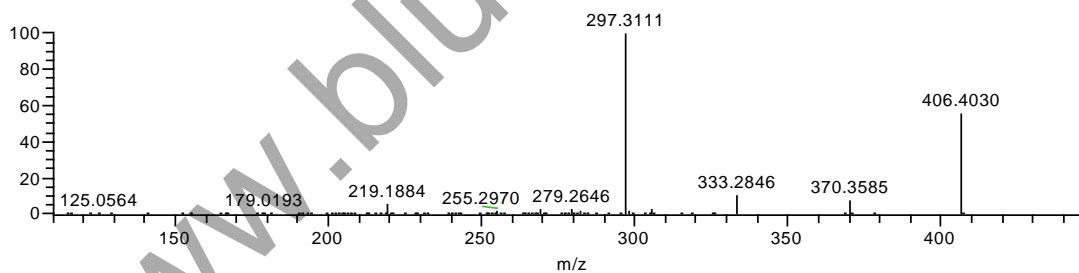
NL: 3.42E7
m/z= 405.5000-406.5000 F: ITMS +
c ESI Full ms [50.00-1000.00] MS
Clom-M002

NL: 6.24E5
m/z= 405.5000-406.5000 F: ITMS +
c ESI Full ms2 406.40@cid25.00
[110.00-500.00] MS Clom-M002

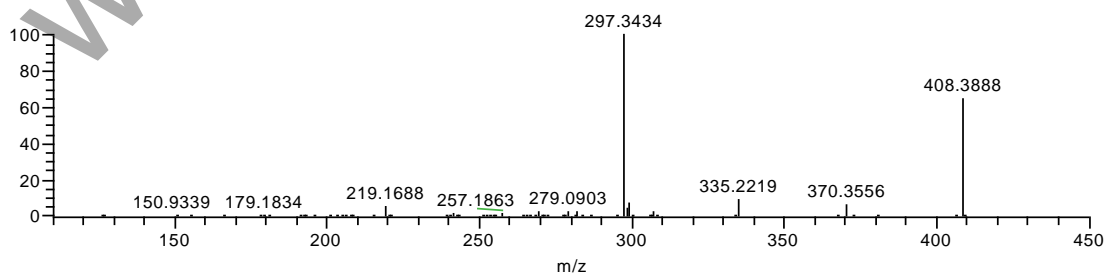
Clom-M002 #6145-6242 RT: 21.71-21.98 AV: 20 SB: 120 20.57-21.45, 22.51-23.67 NL: 3.06E7
F: ITMS + c ESI Full ms [50.00-1000.00]



Clom-M002 #6188-6268 RT: 21.84-22.06 AV: 16 SB: 253 19.44-21.24, 22.85-25.42 NL: 1.03E6
F: ITMS + c ESI Full ms2 406.40@cid25.00 [110.00-500.00]



Clom-M002 #6182-6198 RT: 21.81-21.86 AV: 4 SB: 253 19.44-21.24, 22.85-25.42 NL: 2.91E5
F: ITMS + c ESI Full ms2 408.40@cid25.00 [110.00-450.00]



Property of
www.blueskypeptide.com