

# HPLC Analysis Report

Sample: **Clomifene citrate**

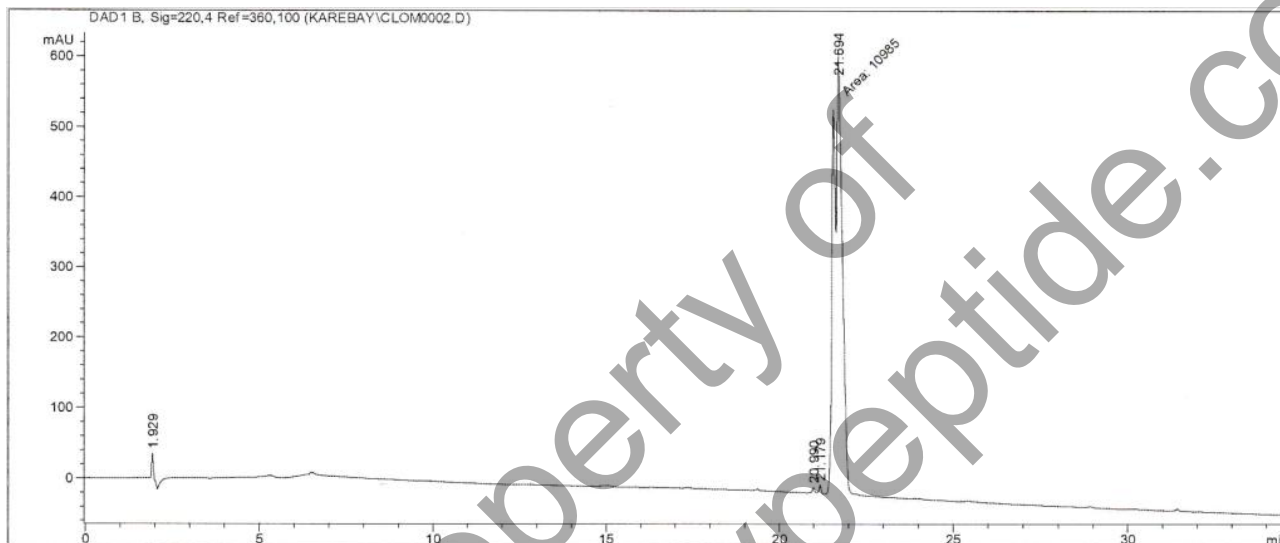
CAS No.: 50-41-9

Synonym: (E,Z)-2-(4-(2-chloro-1,2-diphenylethenyl)phenoxy)-N,N-diethyl-ethanamine Citrate

Flow Rate: 1mL/min

Wavelength: 220 nm

Date: May. 29, 2014



Signal Peak#	RT(min)	Width(min)	Area(mAU*s)	Height(mAU)	Area%
1	20.990	0.071	41.13737	8.41611	0.3712
2	21.179	0.0670	56.42026	12.41937	0.5091
3	21.694	0.2932	10985.00000	624.41870	99.1197
Total			11082.60000	625.25418	100.0000

Analysis Result:

Purity: 99.12% (two E- and Z- isomers)