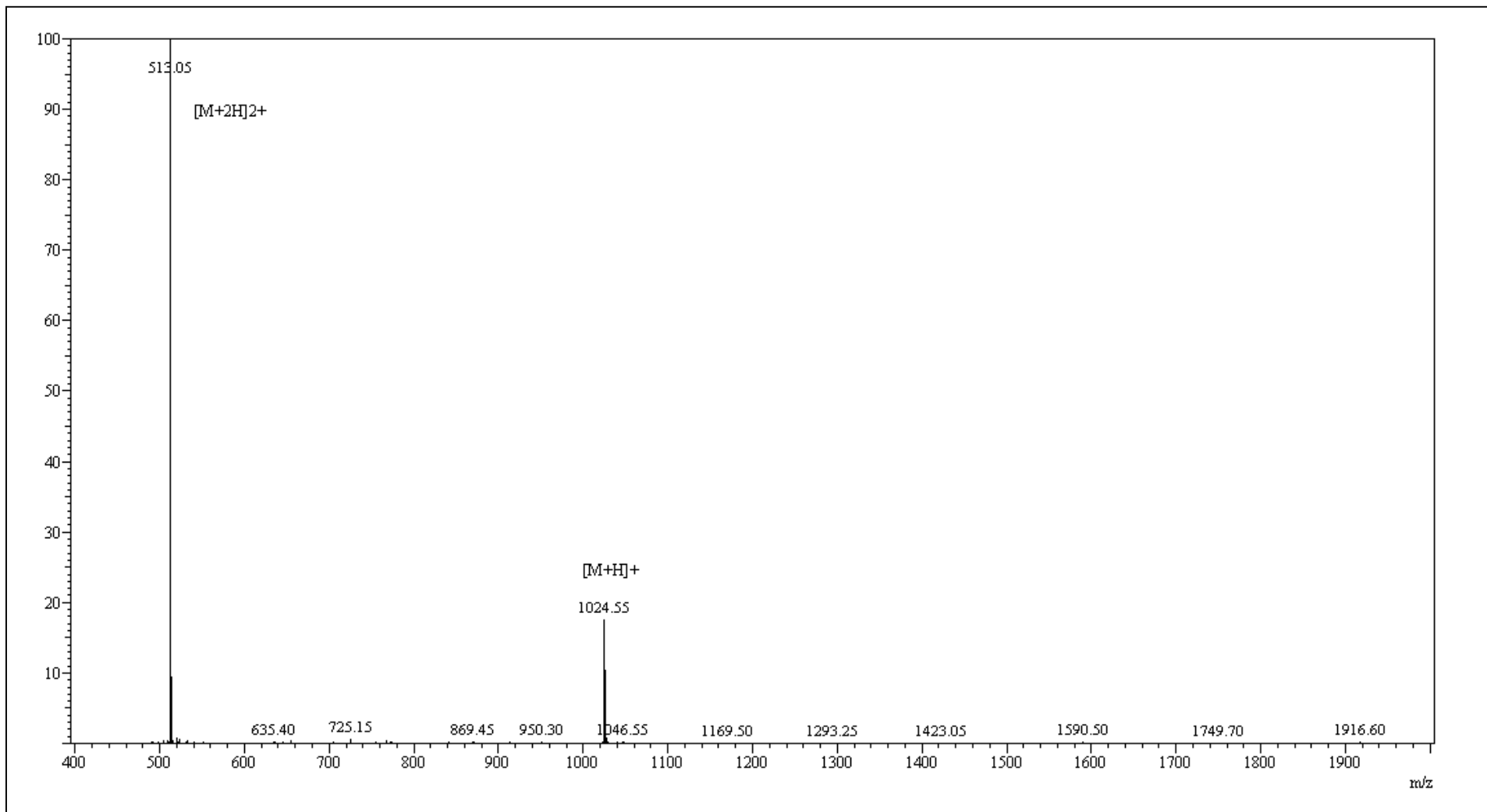


Positive

MS Spectrum



Sample :Melanotan II  
Inj. Volume :1  
MW :1024.2

Probe: ESI  
Nebulizer Gas Flow: 1.5L/min  
CDL: -20.0v  
DL Temp: 250°C  
Block Temp: 300°C

Probe bias: +4.5kv  
Detector: 1.5kv  
T. Flow: 0.2ml/min  
B. conc: 50%H2O/50%ACN