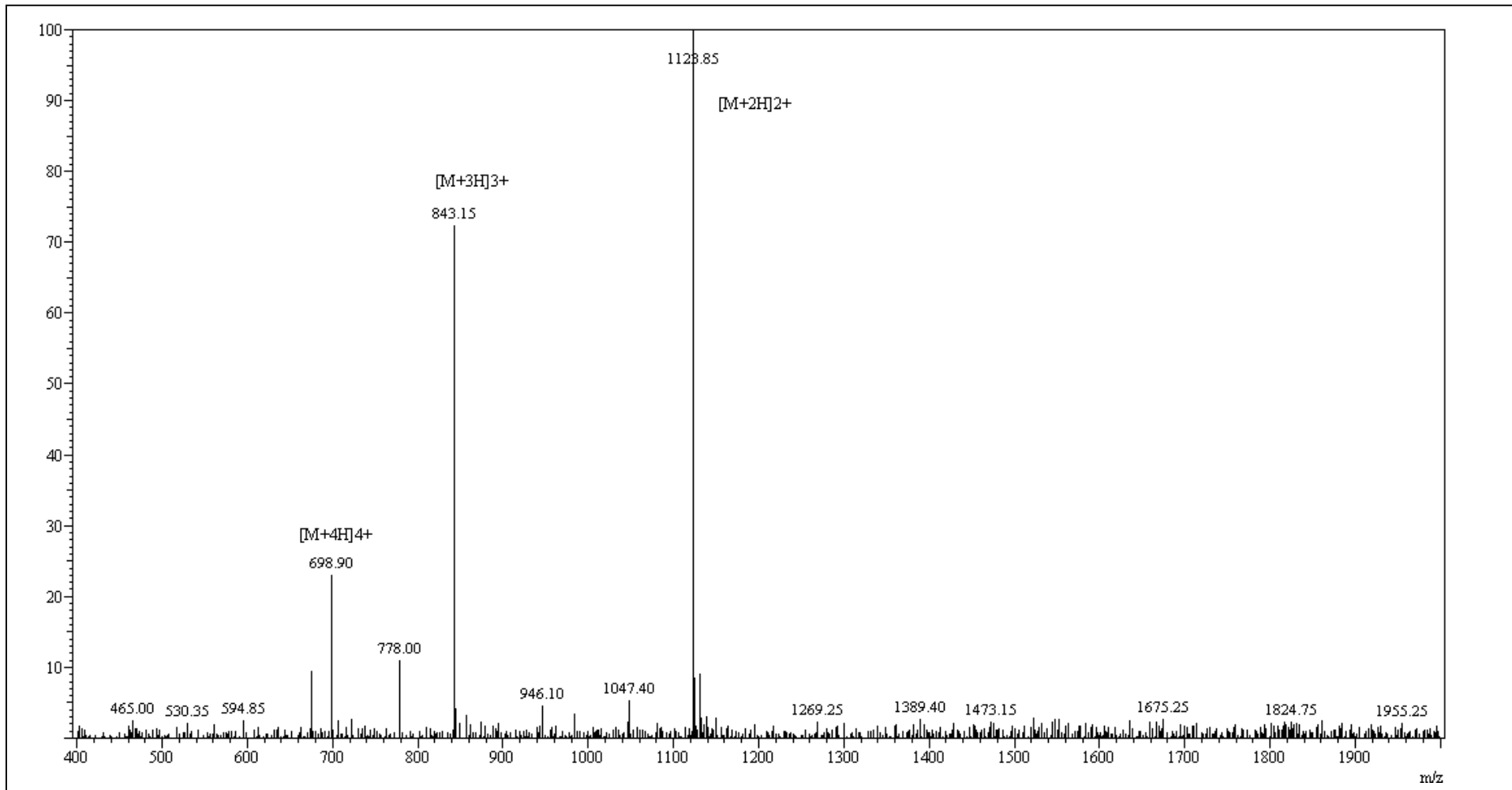


Positive

MS Spectrum



Sample :CJC1295
Inj. Volume :1
MW :3367.97

Probe: ESI
Nebulizer Gas Flow: 1.5L/min
CDL: -20.0v
DL Temp: 250°C
Block Temp: 300°C

Probe bias: +4.5kv
Detector: 1.5kv
T. Flow: 0.2ml/min
B. conc: 50%H2O/50%ACN